



主要参数

	MSD230-□□-100-30G□L-□	
减速比①		32
额定速度 (m/s)		1.1
最大速度 (m/s)		1.5
整机输出扭矩 (N·m)		95.6
电机额定电压 (VDC)	48	
电机功率 (W)	1000	
电机额定转速 (rpm)	3000	
减速机径向负载 (N)	10000	
减速机效率	94%	
防护等级 (电机/减速机)	IP54	

选配/定制 说明

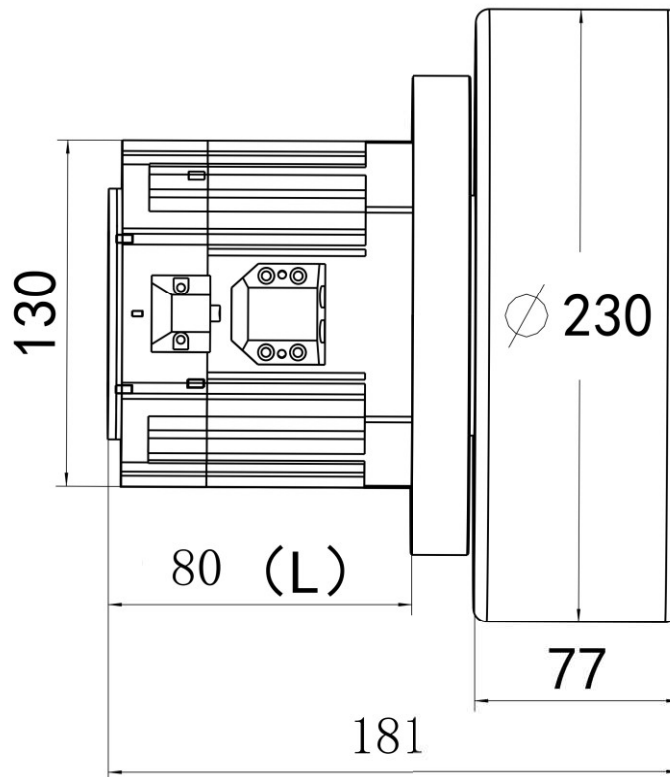
双编码器 (选配) ②	L (SL/N) = 80mm
单编: SL 双编: EL	L (SL/B) = 114mm
刹车 (选配) ③	
无: N 有: B	
安装支架 (定制)	可根据需求做高度客制化定制
高防护等级 (电机/减速机)	可定制
包胶轮胎	可定制

配套产品

型号

驱动器	MBDV-53SAC
顶升模组	
旋转模组	

※备注: MBDV系列驱动器已通过UL/STO认证

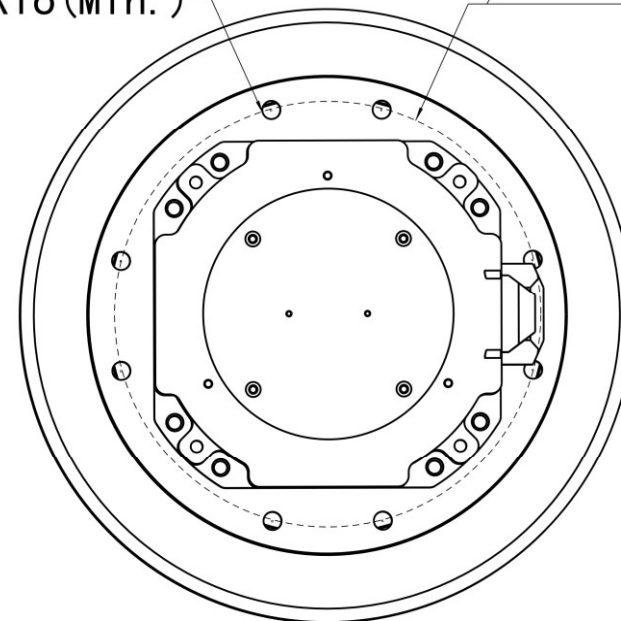


驱动轮: MSD230-□□-100-30G□L-□

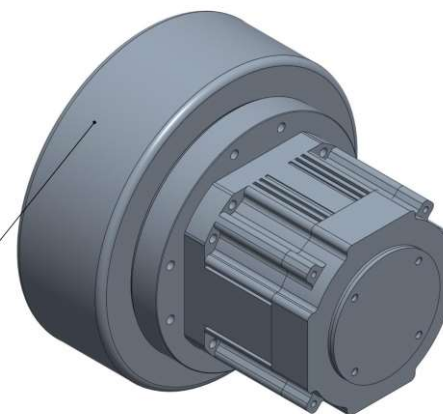
① ② ③

8-M8X16 (Min.)

160



包胶轮属于可拆卸替换件,
建议用户优先自配



尺寸单位: mm

Unit:mm

第一角画法
First angle method



未注线性与角度尺寸公差
Tolerances for linear and angular dimensions
without individual tolerance indications
GB/T 1804-m eqv ISO 2768-1:m

未注形状与位置尺寸公差
Geometrical tolerance for features without
individual tolerance indications
GB/T 1184-K eqv ISO 2768-2:K

批准 Approve

标准化 Standardize

工艺 Process Review

审核 Check

设计 Design

AGV

2025

MOONS'
moving in better ways

This document is released for information only. Its reproduction in whole or in part or its dissemination to third parties is prohibited. All trademarks and registered trademarks appearing on this document are the property of their respective owners.

A0 原始版本 Original revision

REV. 版本记录 REVISION RECORD

DATE

UNLESS OTHERWISE SPECIFIED

NAMES

SIGNATURE

DATE

Drawing No: preliminary

Rev. Pr.

SCALE: 1:1

Sheet 1 of 1