



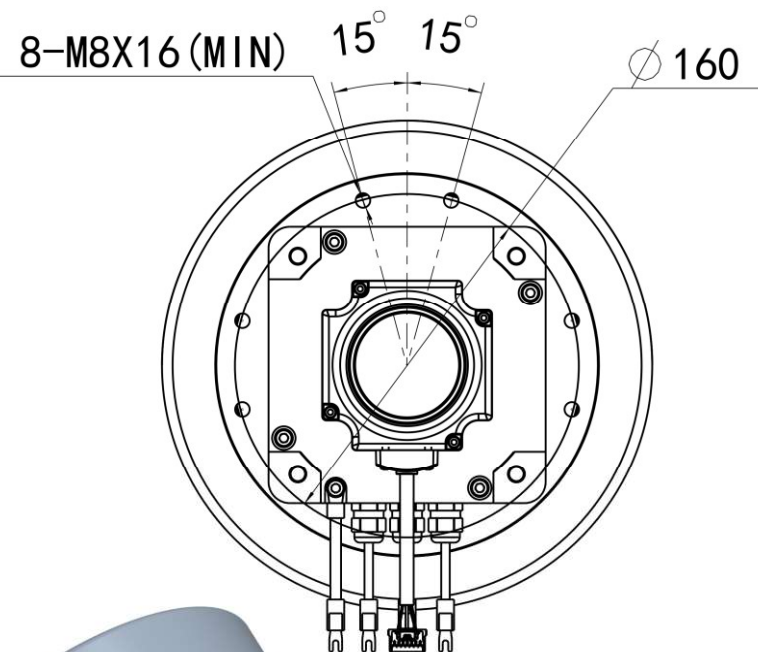
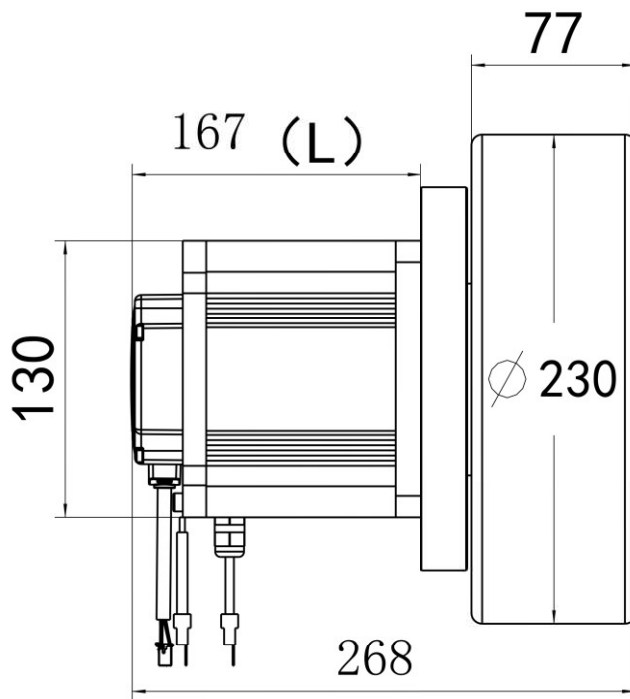
主要参数	MSD230-□□-150-30G□L-□	①	②	③
减速比①			32	
额定速度 (m/s)			1.1	
最大速度 (m/s)			1.5	
整机输出扭矩 (N·m)			143.8	
电机额定电压 (VDC)	48			
电机功率 (W)	1500			
电机额定转速 (rpm)	3000			
减速机径向负载 (N)	15000			
减速机效率	94%			
防护等级 (电机/减速机)	IP54			

## 选配/定制 说明

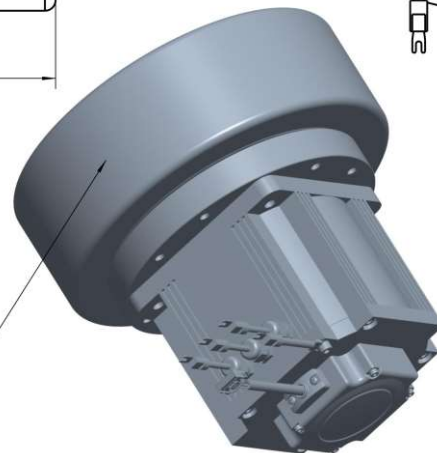
双编码器 (选配) ②	L (SL/N) =137mm
单: SL 双: EL	L (SL/B) =167mm
刹车 (选配) ③	
无: N 有: B	
安装支架 (定制)	可根据需求做高度客制化定制
高防护等级 (电机/减速机)	可定制
包胶轮	可定制

配套产品	型号
驱动器	MBDV-53SAC
顶升模组	
旋转模组	

※备注: MBDV系列驱动器已通过CE/UL/STO认证。



包胶轮属于可拆卸替换件,  
建议用户优先自配



Unit:mm  
第一角画法  
First angle method  
未注线性与角度尺寸公差  
Tolerances for linear and angular dimensions  
without individual tolerance indications  
GB/T 1804-m eqv ISO 2768-1:m  
未注形状与位置尺寸公差  
Geometrical tolerance for features without  
individual tolerance indications  
GB/T 1184-K eqv ISO 2768-2:K

批准 Approve		
标准化 Standardize		
工艺 Process Review		
审核 Check		
设计 Design	AGV	2025

**MOONS'**  
moving in better ways

This document is released for information only. Its reproduction in whole or in part or its dissemination to third parties is prohibited. All trademarks and registered trademarks appearing on this document are the property of their respective owners.

REV.	版本记录 REVISION RECORD	DATE	UNLESS OTHERWISE SPECIFIED	NAMES	SIGNATURE	DATE	Drawing No: preliminary	Rev. Pr.	SCALE: 1:1	Sheet 1 of 1
------	----------------------	------	----------------------------	-------	-----------	------	-------------------------	----------	------------	--------------